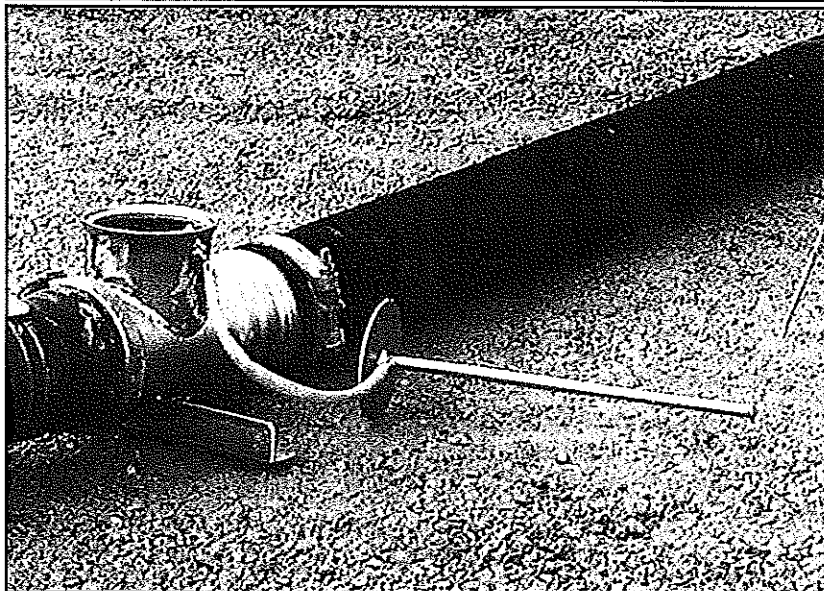




Vacuum Truck Safety Practices



The WJTA is working with the industrial vacuum industry to compile a manual of best safety practices for industrial vacuum truck operators. One such safety practice, shown at left, is the placement of an in-line vacuum relief valve (also referred to as a safety Tee) as close as possible to the working end of the vacuum hose whenever the hose is manipulated by hand. See a draft of the vacuum safety manual table of contents on page 13.



On the inside

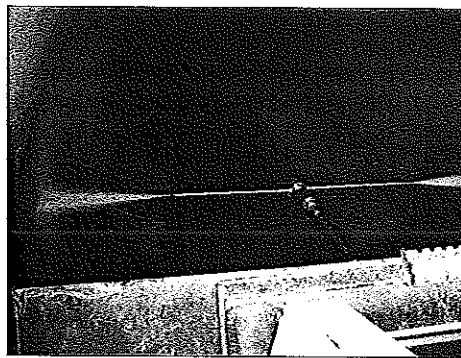
<i>In Remembrance of</i>	
<i>Dr. William C. Cooley</i>	pg. 2
<i>KMT Acquires American Companies</i>	pg. 4
<i>Portland Cleans Sewer Line With</i>	
<i>High Pressure Waterjets</i>	pg. 6
<i>Trim Tool & Machine Cuts Ahead Of</i>	
<i>The Competition</i>	pg. 9
<i>Vacuum Truck Safety Practices</i>	pg. 13
<i>2007 WJTA Conference and Expo</i>	pg. 14
<i>Welcome New Members</i>	pg. 15
<i>KMT Cutting Systems Wins Order</i>	
<i>From Boeing</i>	pg. 16
<i>Enhanced AWJ Cutting</i>	pg. 17
<i>Innovative Uses of AWJs for Glass</i>	pg. 18
<i>WARDJet's Pneumatic Drill Mount</i>	pg. 19
<i>Nominations Open for WJTA</i>	
<i>Board of Directors</i>	pg. 20
<i>Jet Edge Appoints New Regional</i>	
<i>Sales Manager</i>	pg. 21

**2007 American
WJTA Conference and Expo
Information inside this issue...**

Portland Cleans Sewer Line With High Pressure Waterjets

When Portland, Oregon, needed to increase the flow rate through one of its sewer lines, the city decided to put a sleeve in the line to reduce the pipe diameter. In order to slip the sleeve into place with a good fit, CCS (A Division of PNE Corp.), was called in by the lead contractor to clean the existing 102-inch diameter line.

Based in Longview, Washington, CCS has a total of five offices throughout the northwest. CCS's most distinct operations include environmental emergency response (land and marine), industrial cleaning, commercial sweeping, hazardous and non-hazardous disposal and environmental and ecological services.



A rigid lance from the hose of a Jetstream high pressure pump was attached to a skid steer bucket, so that the loader could be used to pull the hose through the pipe while keeping the jets centered.

"The project was tailor made for one of our Jetstream high pressure pumps," says Matt Worel, Longview division supervisor for CCS. "We hooked up a 2D head to a rigid lance."

The 2D head was designed to spray high pressure water in two horizontal directions in a way that covers the entire circumference of the interior of the pipe, according to Worel. The 2D head involved a standard rigid lance with a T connection at the end. Each side of the T extended out from the center and was mounted with a head attachment that directs the spray. As the head was spun, the water blast covered the full diameter of pipe.

"The challenge then was how to pull 700 feet of hose through the sewer line," says Worel. CCS has tackled projects like this in the past and the solution they developed involves attaching the head and lance to the bucket of a skid steer loader with the

(continued on page 8)

WANT AN ALTERNATIVE SOURCE FOR YOUR WATERJET SYSTEM?

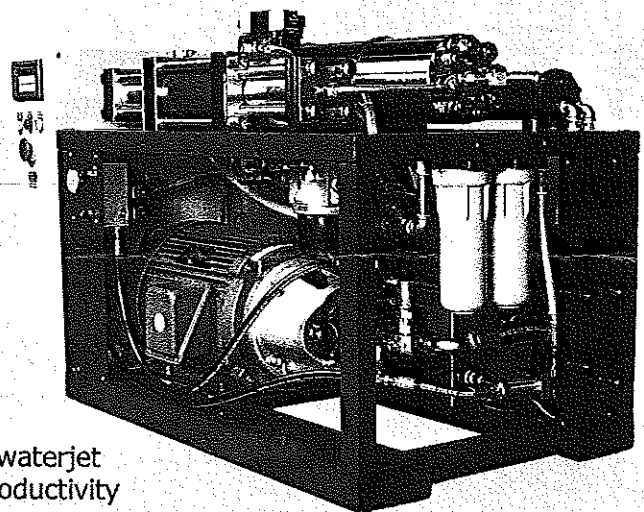
Ask AccuStream How

Our new **low cost** waterjet cutting package provides everything you need, including:

- Total system Integration
- Best Warranty in the Industry
- Training and service support
- Waterjet engineering assistance



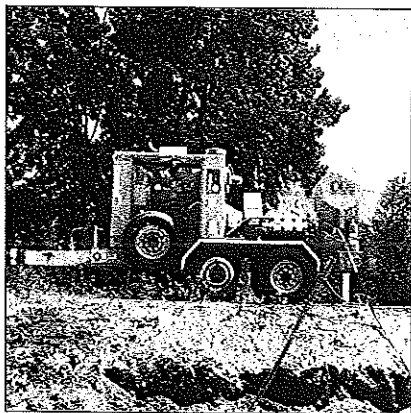
Ask the Experts at AccuStream how our waterjet integration package can improve your productivity and keep you ahead of the competition.



Ask AccuStream How
Toll Free 866.566.7099



Integration
Tech Support
Replacement Parts
Equipment



Skid steer loader emerges from sewer line after pulling hose from Jetstream high pressure pump used in the cleaning of the pipe's interior surface.

hose trailing behind. With the sewer line opened at both ends, the crew was able to lower the skid steer loader into one of the openings and move forward to the second opening while cleaning the pipe as it went.

To begin the cleaning once the skid steer loader was in position, the operator raised the bucket so that it was approximately in the center of the pipe. This was low enough to give the operator excellent visibility over the bucket and high enough for the spray to clean the entire interior surface of the sewer line wall as planned.

With the lance in position on the raised bucket, the operator began the cleaning operation, using the muscle of the skid steer loader to pull the hose behind the machine.

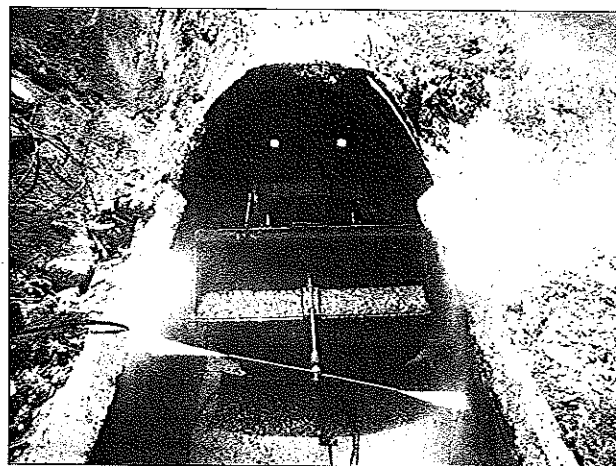
"Using the skid steer loader moves the hose more efficiently and is less labor intensive," says Worel.

10,000 PSI powers away build-up

The cleaning project involved a Jetstream 10,000 psi, 260 horsepower diesel-powered high pressure pump equipped with a work bench and vise. While the unit is equipped with a

conversion feature that allows it to be set up for as high as 40,000 psi, this application required a lower psi, reports Worel.

CCS relies on its Jetstream high pressure pumps at or near the 40,000 psi mark when working on projects such as heavy tank cleaning or a surface prep project. They also report using high pressure waterjets when preparing steel for x-ray and inspection.



Jetstream high pressure pump delivers the waterjets needed to clean a section Portland's sewer line in preparation for the installation of a sleeve.

Among the more unusual projects CCS has been called upon to perform, was the cleaning of grain from the hold of a ship. In this case, the project involved some of the company's six Guzzler vacuum loaders.

"We rely on newer equipment," says Worel. "When municipalities are depending on you 24/7 for emergency work, you have to show up with equipment that works."

"Minor breakdowns are inevitable when the equipment is used as often as ours, but Jetstream makes it easy to repair on the spot, so we don't lose much time on the job," adds Steve Johnson, Industrial Services Division manager for CCS. "The relationship between CCS and Jetstream keeps us coming back. We know they are there to serve us, and they go above and beyond to answer our questions and make

sure we have a full understanding of how their product will help our business grow."

"Each year we purchase a new Guzzler to provide our customers the benefits of the features this equipment has to offer," says Johnson. "We pride ourselves on safety and training at CCS, and value the training techniques Guzzler has offered."

"Like Jetstream and Guzzler, Vactor is also a step ahead in quality and production. Its training technique is an asset to our new hire training program," reports Johnson.

"With constant industrial and mill type work, CCS knows the importance of a strong fleet," says Johnson. "The Federal Signal brands, like Jetstream, Guzzler and Vactor, provide CCS with the dependability and power we've come to expect from our equipment."

IMPORTANT NOTICE REGARDING SPAM

Email addresses and other member contact information published in the WJTA Membership Directory is meant to encourage helpful, informative communication between members. The information is not provided to circulate spam or junk mail.

The WJTA leadership requests that members respect the contact information of fellow members and not use that information for the dissemination of spam or junk email. Membership information is not meant to be circulated beyond the WJTA membership.